

# 10% Staff Discount



# 20% Student Discount

Available for treatments, not retail products.

## Appointments

Date	Time	Treatment
DD/MM/YY		
DD/MM/YY		
DD/MM/YY		
DD/MM/YY		
DD/MM/YY		
DD/MM/YY		
DD/MM/YY		
DD/MM/YY		

## Hours Of Business

Monday	9am-6:30pm
Tuesday	9am-6:30pm
Wednesday	9am-6:30pm
Thursday	9am-6:30pm
Friday	9am-4:15pm
Selected evenings (call for details)	6pm-9pm

## Contact Us

South Lanarkshire College  
College Way  
East Kilbride  
G75 0NE

**01355 807465**

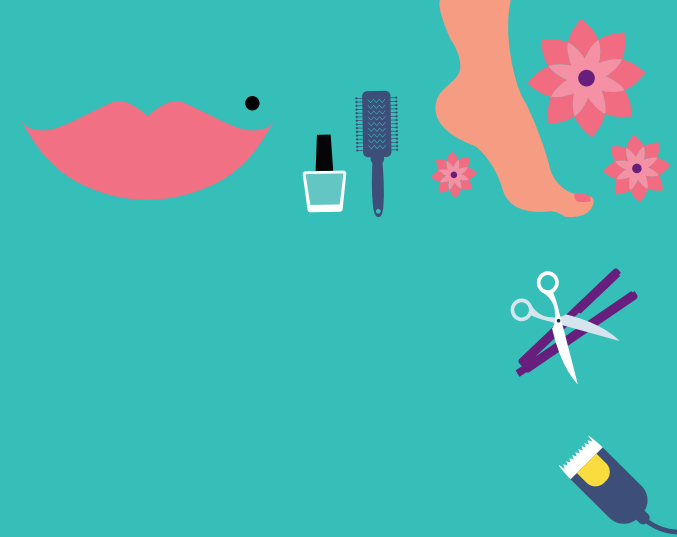
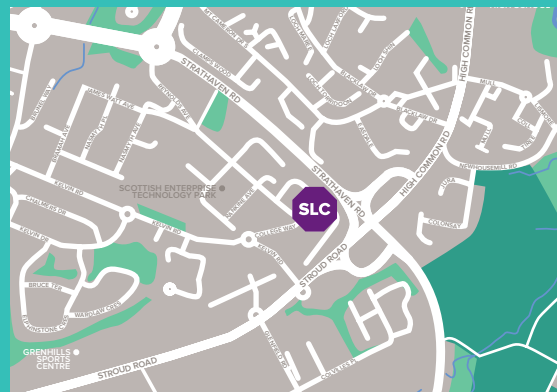
**hairandbeauty@slc.ac.uk**

**www.slc.ac.uk**

 **SLCek**  **SLCek**  **SLC\_ek**



 **@salonandspaSLC**



# HAIRDRESSING BEAUTY THERAPY SPA



### HEAD OF FACULTY

Myra Sisi

### CURRICULUM MANAGERS

Hairdressing - Margaret Campbell

Beauty Therapies - Joanne Warwick

**Due to health & safety regulations skin testing is required 48 hrs prior to every hair colour application & eye tint/perming application.**

### SPA DAYS

£

Includes tea, Coffee, Use of Sauna & Steam Room, Full Body Massage, Lunch and two further Treatments.

Available selected Fridays.

### BEAUTY THERAPY FACIALS

Kaeso Facial	£
Strictly Professional	£
Dermalogica	£
Skin Rejuvenation (IPL) 1 per month	£

### WAXING / HAIR REMOVAL

Underarm	£	Eye brows	£
Bikini	£	Half Leg	£
Lip & Chin	£	Full Leg	£

Individual packages available.

### MASSAGE

Full Body Massage	£
Back Massage	£

G5. Infrared, Audio Sonic can also be incorporated into massage with our advanced class.

### MANICURE & PEDICURE

Manicure / Pedicure	£
Manicure & Pedicure	£
Paraffin wax additional charge per treatment	£2.

### NAIL ENHANCEMENTS

Gel Polish	£
Nail Extensions from	£

### EYE TREATMENTS

Eyebrow Tweeze	£
Eyebrow / Eyelash Tint	£
Semi Permanent Lash	£
+ Top Up	£
Strip / Individual Lashes	£
Including lashes left for next infill.	
Eyebrow Artistry	£
(Wax, Tint, Thread & Finishing Products)	

### SPA TREATMENTS

Body Electrical Treatments	£
To help reduce cellulite, improve texture of skin, for inch loss and sheer relaxation.	

### FACE AND BODY ELECTRICAL

A truly pampering experience to help improve the overall appearance of skin texture and tone.

Advance Face or Body	£
(Galvanic, Faradic, Non-Surgical Face Lift, Vacuum Suction, High-Frequency)	
Microdermabrasion	£
See our specialised programme for details.	

### CUT & SET

#### Shampoo & Set

Short Hair	£	Long Hair	£
------------	---	-----------	---

#### Blow Dry

Short Hair	£	Long Hair	£
------------	---	-----------	---

#### Bouncy Blow Dry

£

### CONDITIONING TREATMENT

Short Hair	£	Long Hair	£
Wella Plex Treatment			£

### CUT & BLOW DRY

Level 5	£
Level 6	£
HNC	£
Hair Up	from £
GHD Curls	£
Gents Cut	£

### COLOUR

Semi - Permanent	£
Quazi	£
Root Regrowth	£
Root & Refresh	£
Full Head Tint	from £
Highlights/Lowlights (Cap)	£
T-Bar	from £
Scattered Highlights	from £
Fashion - Half Head Foils	from £
Fashion - Full Head Foils	from £
Balayage	from £

Cut & blow dry not included.

Colour Correction	from £
-------------------	--------

Consultation must be carried out before service to confirm price.

Ombre	£
-------	---

### PERMS

Short Hair	£
Long Hair	£

Cut & blow dry not included.

Keratin Blow Dry	from £
------------------	--------

Scheduled availability.

**FULL RANGE OF WELLA RETAIL PRODUCTS ARE AVAILABLE FROM HAIR & BEAUTY RECEPTION.**

